



Beaufort County
Public Works
Stormwater Infrastructure
Project Summary

Project Summary: Port Royal Island Repaired Washouts - Huron Drive and Pine Grove Road

Activity: Routine/Preventive Maintenance

Narrative Description of Project:

Repaired washouts.

Completion: Aug-14

2015-518 / Port Royal Island Repaired Washouts	Labor Hours	Labor Cost	Equipment Cost	Material Cost	Contractor Cost	Indirect Labor	Total Cost
AUDIT / Audit Project	0.5	\$10.23	\$0.00	\$0.00	\$0.00	\$6.62	\$16.85
HAUL / Hauling	7.0	\$156.11	\$74.90	\$46.83	\$0.00	\$105.03	\$382.87
PRRECON / Project Reconnaissance	2.0	\$88.54	\$7.24	\$6.06	\$0.00	\$67.92	\$169.76
RPWO / Repaired Washout	36.0	\$728.28	\$113.06	\$135.57	\$0.00	\$479.85	\$1,456.76
2015-518 / Port Royal Island Repaired Washouts Sub Total	45.5	\$983.16	\$195.20	\$188.46	\$0.00	\$659.42	\$2,026.23
Grand Total	45.5	\$983.16	\$195.20	\$188.46	\$0.00	\$659.42	\$2,026.23

(Pictures Not Available)

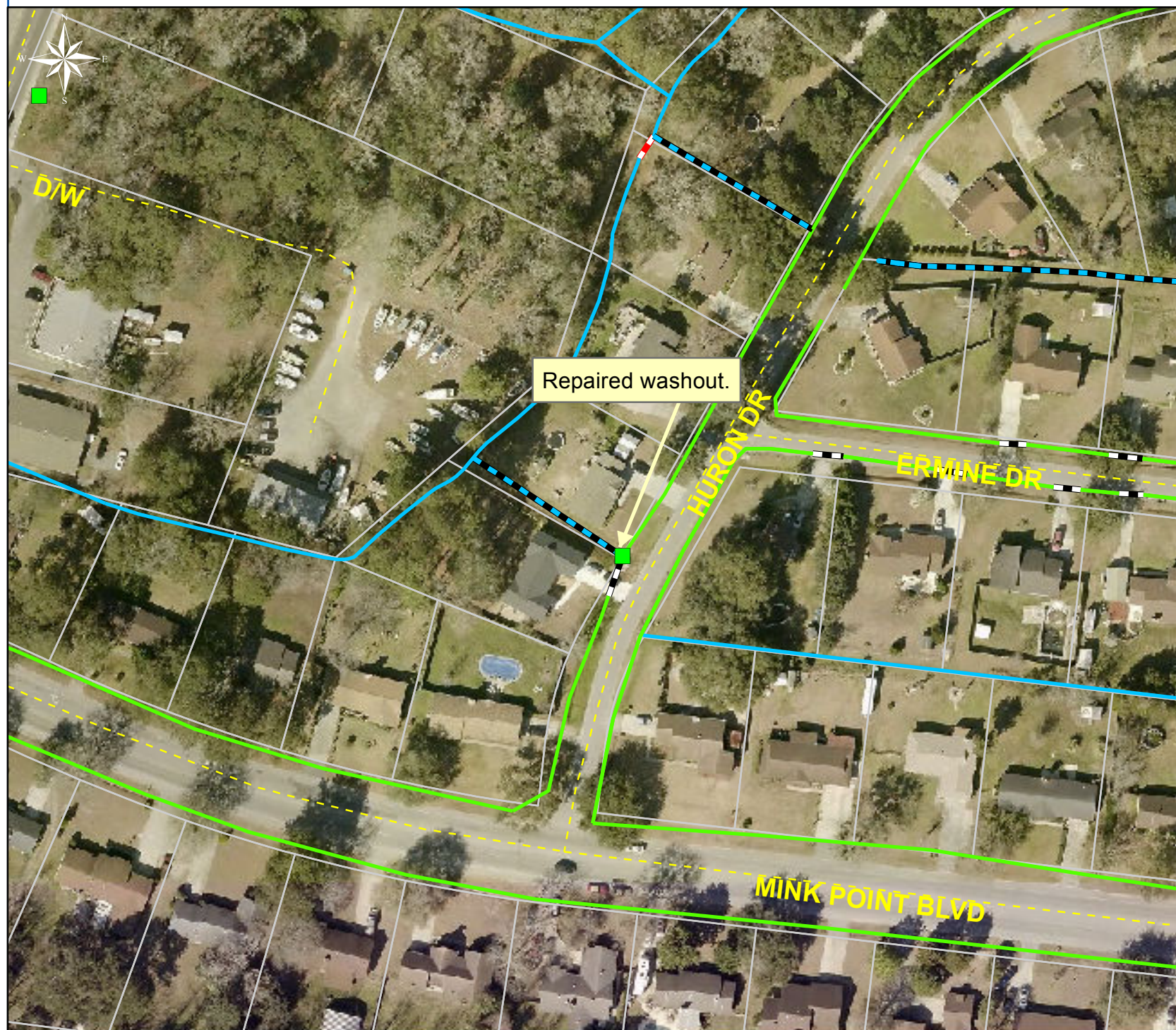
Project: Huron Drive

**Activity: Routine/
Preventive
Maintenance**

**Project #:
2015-518**

**Township: Port
Royal Island**

**Completed:
August 2014**



Legend

TYPE

- River
- Creek/Stream
- River/Creek/Marsh BANK
- Channel (fka Outfall)
- Channel Pipe
- Lateral
- Lateral Pipe
- Roadside
- Roadside Pipe
- Road Pipe
- Crossline Pipe
- Driveway Pipe
- Access Pipe
- Bleeder Pipe

0 25 50 100 150 200
Feet

1 inch = 113 feet

Prepared By: BC Stormwater Management Utility

Date Print: 1/23/15

File: C:/sethdata/projects/projectmaps/Huron Dr 2015-518

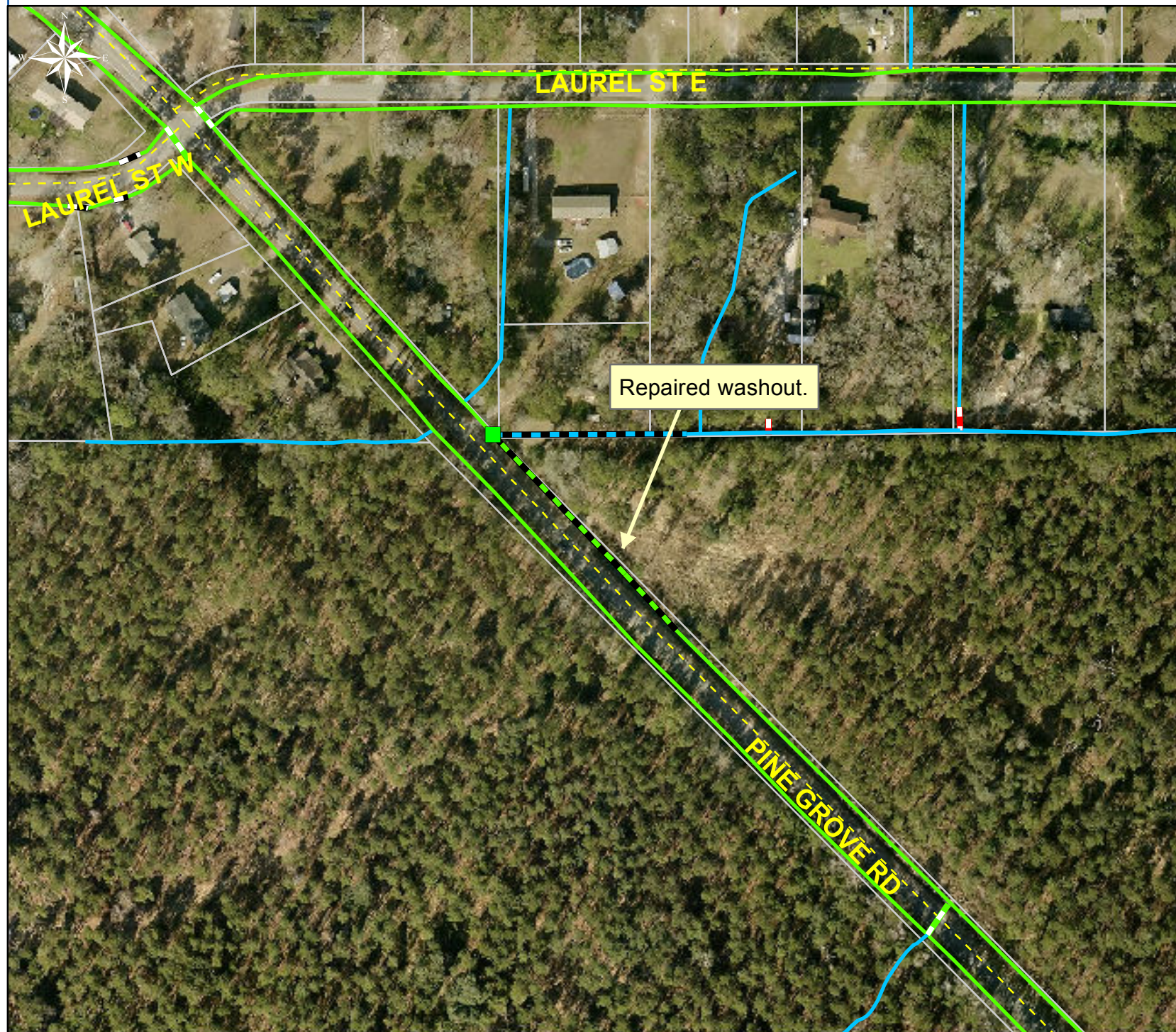
**Project: Pine
Grove Road**

**Activity: Routine/
Preventive
Maintenance**

**Project #:
2015-518**

**Township: Port
Royal Island**

**Completed:
August 2014**



Legend

TYPE

- River
- Creek/Stream
- River/Creek/Marsh BANK
- Channel (fka Outfall)
- Channel Pipe
- Lateral
- Lateral Pipe
- Roadside
- Roadside Pipe
- Road Pipe
- Crossline Pipe
- Driveway Pipe
- Access Pipe
- Bleeder Pipe

0 45 90 180 270 360
Feet

1 inch = 180 feet

Prepared By: BC Stormwater Management Utility

Date Print: 1/23/15

File: C:/sethdata/projects/projectmaps/Pine Grove Rd 2015-518